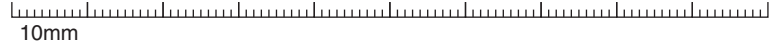


The Board Room

BEAMod - Modular building blocks for BEAM robotics

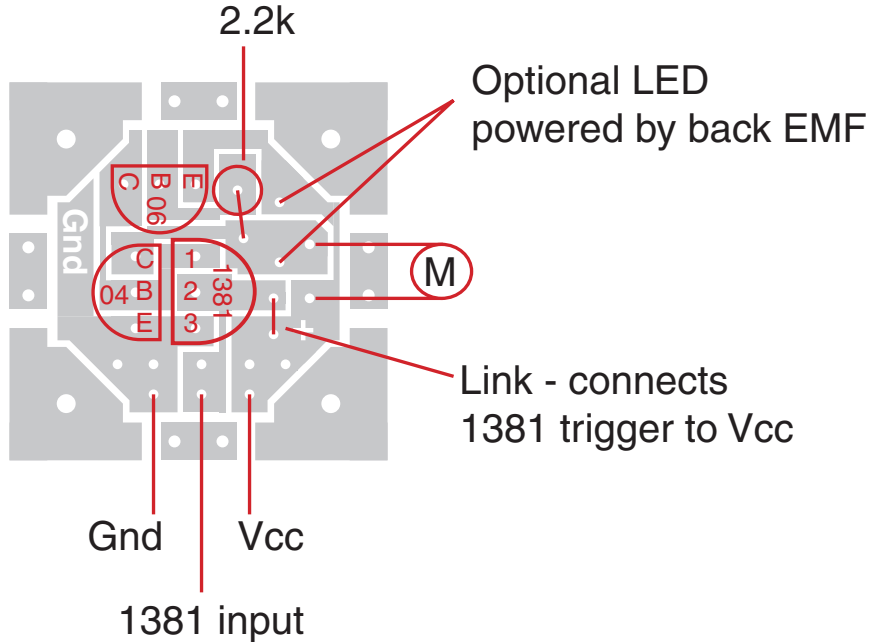
© Bill Bigge 2001



Mono 1381 'Popper' Solar Engine v1.1

A compact 1381 Solar Engine on a 20 x 20mm PCB with an alternative version without the border.

A wire link can be used to connect the trigger directly to Vcc or you can make the connection from elsewhere. Use two together with a trimpot to make a photovore. A spare pair of holes on the motor outputs can be used for an LED that will work from the back EMF generated by the motor.



Strip of four

Single with and without border

